

# ScreenRecord 2

## User's Guide



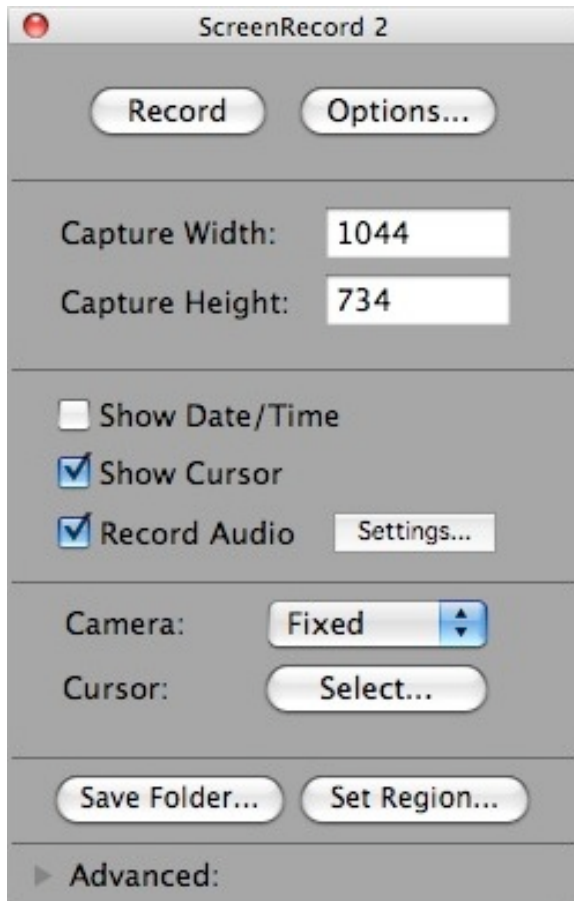
# Table of Contents

<b>Introduction</b>	2
<b>1. Basics</b>	
1-1. The Main Window	3
1-2. Setting up for Recording	4
1-3. Capture & Action hot keys	6
1-4. Recording	9
1-5. Movie Viewer	11

# Introduction

This is a step by step guide to using ScreenRecord.

The ScreenRecord environment allows you to easily record and edit movies:



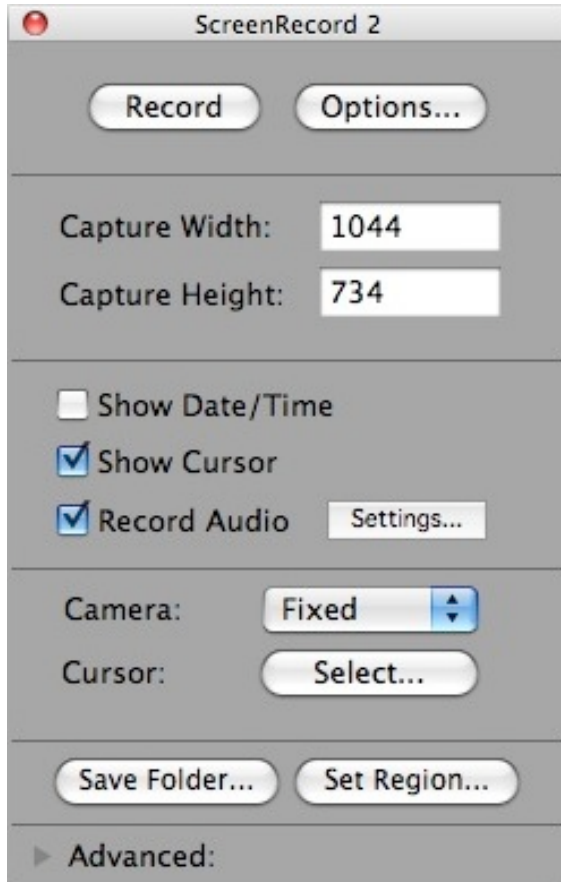
This is the ScreenRecord environment. Here you may set the options to begin recording video from your screen and audio from your microphone to a QuickTime movie.

In the following pages, you will learn all the main features of ScreenRecord.

# 1. Basics

## 1-1. The Main Window

The main window contains all the basic settings that you will need to record your screen:



**Record** – Press this button to start/stop recording your screen.

**Options** – This brings up more options such as compression, quality, frame rate, and the size of the final movie.

**Capture Width** – This is the capture width.

**Capture Height** – This is the capture height.

**Show Date/Time** – Check this option to show the current date and time while capturing.

**Show Cursor** – Check this option to show the user's cursor in the recorded movie.

**Record Audio** – Check this option to record with audio from a sound input device such as a microphone.

**Settings** – Click here to show the audio settings. In the audio settings, you may change the input source, compressor, and quality of the audio.

**Camera** – This is the type of camera to use while recording. The camera is the area to capture on your screen.

- **Fixed** – This option will leave the camera at a fixed location that you set.
- **Smooth Pan** – This option will smoothly pan the camera to the location of the user's cursor.
- **Auto Pan** – This option will move camera to the location of the cursor when the user moves the cursor close to the bounds of the camera.

**Save Folder** – Click this button to choose the folder to save your recorded movie.

**Set Region** – Click this button to set the location and size to record your screen.

**Stop/Stop Keys** – Click this button to set the hot keys to start and stop recording.

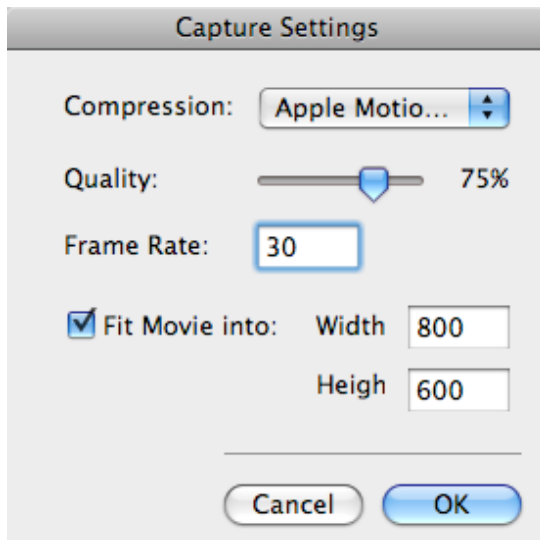
**Action Keys** – Click this button to set actions keys that will be able to change any setting on the main window while capturing.

## 1-2. Setting up for Recording

In this section, we will learn how to set up the settings in the Main window for recording.

### Do this:

- Click the **Options** button to bring up the following window:



### Do this:

- Input the number of frames you would like to record in the **Frame Rate** text box.

Now lets set the dimensions of the final movie. It will fit the captured movie area into this dimension.

### Do this:

- Input the size of the movie you want in the **Width** and **Height** text boxes.

Press **OK** to return to the main window.

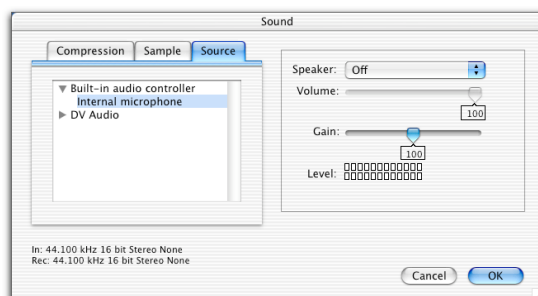
If you would like to record with date and time visible on your captured movie, then check the **Show Date/Time** option.

Check the **FullScreen** option to record your entire screen. Check the **Fullscreen Movie** option to change the dimensions of your movie to fill the screen (*this option will ignore the width and height you input for the movie*).

Check the **Show Cursor** option to record with the cursor visible, otherwise the cursor will not show in the recorded movie.

Check the **Record Audio** option to record audio from your microphone to your movie.

Click the **Settings** button to change the audio settings such as compressor, source, and quality:



**Do this:**

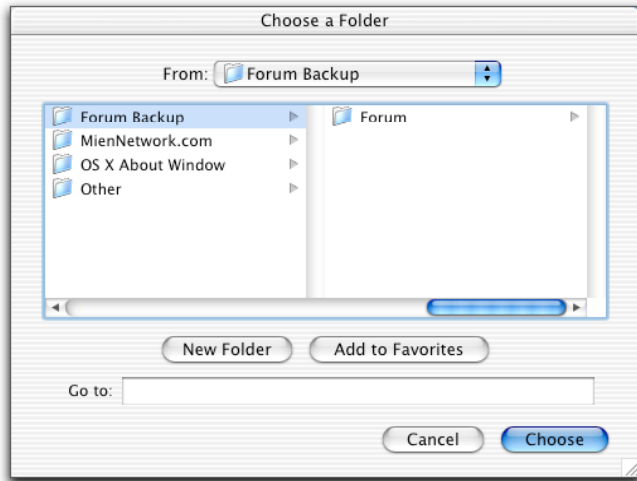
- Turn on or off the above options that you want or don't want
- Change to the camera type you want.

Now let's set the location to save the captured movies.

**Do this:**

- Click on the button **Save Folder**

- A window allowing you to choose the folder to save your captured movies will appear:

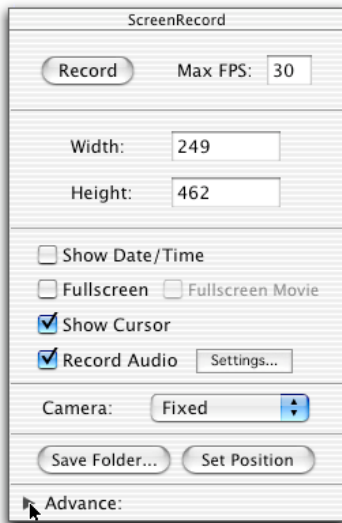


- Select a folder you would like the movies to be saved and press **Choose**.

Now we have set all the basic settings needed to record. In the next section, we'll go over the more advanced capturing settings.

### 1-3. Capture & Action hot keys

In this section, we will learn the advanced settings for recording.



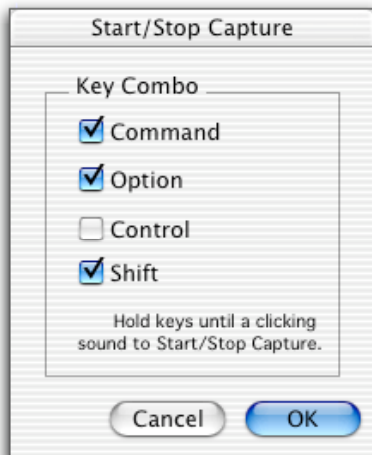
Click on the disclosure triangle on the bottom next to the **Advance** label to show the more advanced record settings.

Now the **Main** window should expand to show more options:



**There are two Advance settings:**

**Stop/Start Keys** – Click this button to set the hot keys to stop or start recording your screen:



**Do this:**

- Check all the keys you would like to hold down to trigger a record or an end of record.
- Press **OK** to set the keys.

Please Note: You will need to hold the keys until you here a snap sound for the recording to begin or end.

**Action Keys** – Click this button to set hot keys to perform actions during a screen capture:



Action keys allow you to change settings such as camera position, camera size, etc. while you are capturing your screen.

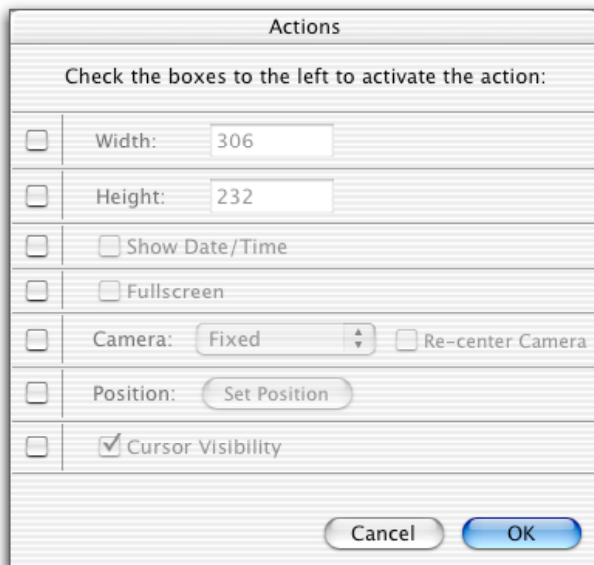
They could be used to focus the camera on different windows or locations when capturing an area smaller than the entire screen.

Actions keys can be assigned to any of the function keys on your keyboard from F1 to F12. Now let's do a sample Action key.

**Do this:**

- Click *Set Action* for F1.

The following window will open:



**Width** – This is the width of the capture area.

**Height** – This is the height of the capture area.

**Show Date/Time** – Check this option to show the current date and time.

**Fullscreen** – Check this option to record the entire screen.

**Camera** – This is the type of camera to use while recording.

**Fixed** – This option will leave the camera at a fixed location that you set.

**Smooth Pan** – This option will smoothly pan the camera to the location of the user's cursor.

**Auto Pan** – This option will move camera to

the location of the cursor when

the user moves the cursor close to the bounds of the camera.

**Position** – Click this button to set the position (and size) of the camera:



Press the space key to accept the position and size. Press the ESC key to cancel the changes.

You may also right-click to bring up a menu,

The highlighted area is the position and size of the camera. You may move it by dragging within the highlighted area. To resize, drag the small boxes at the corners of the highlight area.

**Cursor Visibility** – Check this option to show the user's cursor.

On the left part of the window are check boxes. By checking these check boxes, the settings to the right of that check box will be changed when the user presses the that function key.

**Do this:**

- Turn on one or more of the settings by checking the check boxes on the left.
- Now change the settings to something new.
- Press **OK** when done.
- Press **Done** on the **Set Action Keys** window.

Now when you hold F1 on your keyboard until you hear a *woop* sound while recording, the settings will be changed to the settings you set for the F1 function key. When you hold that same function key again until you hear a pop sound, the settings will revert back to the original capture settings.

Now you have learned how to assign action hot keys.

## 1-4. Recording

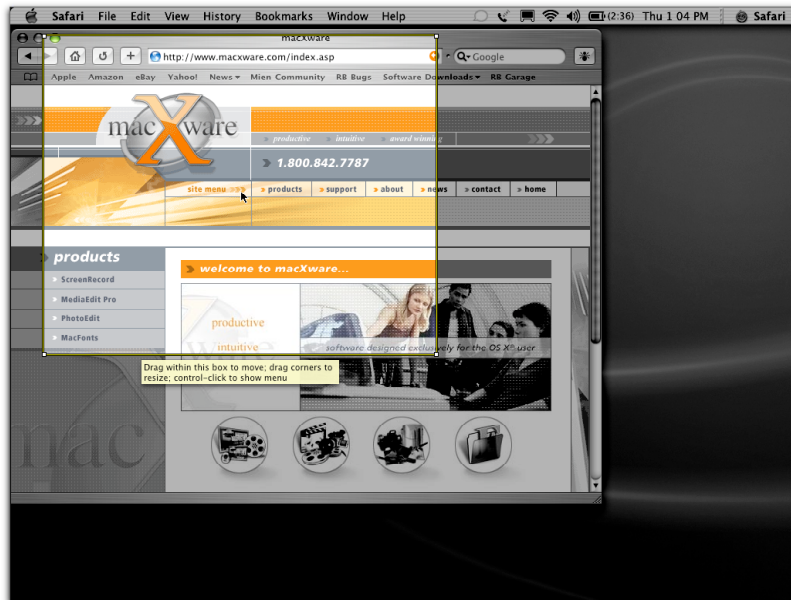
In this section, we will guide you through the recording process.

Lets begin recording!

### Do this:

- Press **Record** from the **Main** window or trigger the record by pressing the record hot keys (if you have it set).

Now your screen should look something like this:



The highlighted area is the position and size of the camera You may move it by dragging within the highlighted area. To resize, drag the small boxes at the corners of the highlight area.

Press the space key to accept the position and size. Press the ESC key to cancel the changes. You may also right-click to bring up a menu,

### Do this:

- Position and size the camera
- Press the space key to accept the position and size.

Now it should be recording your screen.

### Do this:

- Once you're ready to end the capture, click on the ScreenRecord icon in the dock to end it, or you may press the start/stop hot key if you have it set.

Now you recorded movie should automatically load in ScreenRecord.

Here you may delete the movie if you don't like it, or you may edit your movie using copy and paste.



To delete the movie you just recorded, choose menu: File → Delete

## 1-5. Movie Viewer

In this section, we will learn about the Movie Viewer and its powerful features.

### 1, Editing:

The movie viewer contain simple editing features using cut, copy, paste, and clear.

Let's first learn how to select a movie segment with the Movie Viewer by using the controller bar on the bottom of the **Movie Viewer** window:



Let's select from the beginning of the movie to the middle of the movie so you can get the first half of the movie selected.

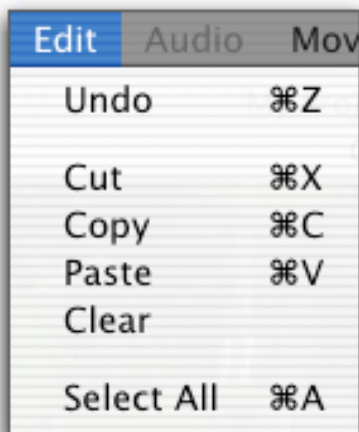
### Do this:

- Move the movie cursor to the beginning of the movie and release the mouse.
- Drag the movie cursor to the middle of the movie:



Now the first half of your movie is selected.

We can choose delete it, copy it, or cut it out by using the Edit menu (pressing the delete key will also delete the selected movie segment):



**Do this:** Choose one of the editing item to perform the action you want:

**Cut** – Removes the selected movie segment from the movie and puts it into the clipboard.

**Copy** – Makes a copy of the selected movie segment to the clipboard.

**Paste** – Pastes the movie segment or picture into the position of the **Movie Cursor**.

**Clear** – Deletes the selected movie segment.

### Undo/Redo Do:

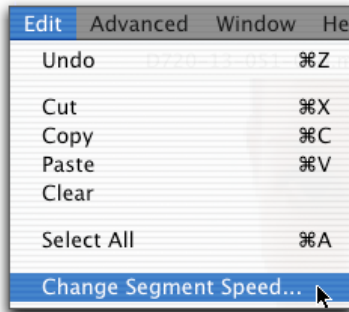
If you made a mistake, you can undo your action by choosing menu: Edit → Undo.

If you want to bring back the change, you can redo a previous undo by choosing menu: Edit → Redo.

*That's it; you've learned to edit using the Movie Viewer. When you are done, you can save it by choosing the menu: File → Save...*

## 2. Resize segment:

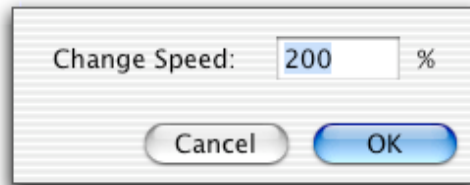
You could easily resize a segment of movie. When you resize a segment of your movie, it will change its playback speed.



### Do this:

- Select the segment of your movie that you would like to resize.
- Choose menu: *Edit* → *Change Segment Speed...*

The following window should appear:



### Do this:

- Input the amount to speed up in percentage. A value of 200% will play back twice as fast; therefore, the segment will be twice as short.
- Press **OK**

Now the segment you selected should be a new speed and length.

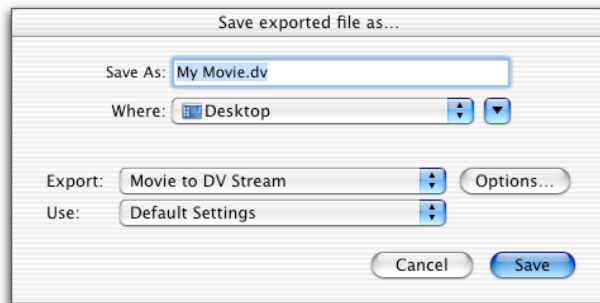
## 3. Exporting:

The Movie Viewer has the ability to export any QuickTime compatible movie!

### Do this:

- Choose menu: *File* → *Export...*

Your export dialog should look something like this:



**Export** – This is the format to export your movie or project to.

**Use** – These are preset settings you may use for the selected format.

**Options** – Click here to view more options for the selected format.

### Do this:

- Set a name and location to save the file.
- Select a format and change it to the settings you want.
- When you're done, you may export your movie by clicking **Save**.